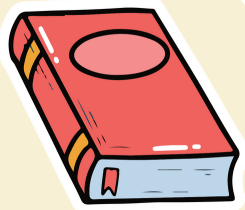


# LOWELL SCHOOL BREAKFAST CLUB

**MONDAY-FRIDAY**

**DOORS OPEN AT  
8:30 AM**



**DO NOT SEND YOUR  
STUDENTS TO BREAKFAST  
CLUB BEFORE 8:30 AM**

UNDER THE DIRECTION OF MS. RYERSON, THE BREAKFAST CLUB PROVIDES AN OPPORTUNITY FOR STUDENTS TO COME IN A LITTLE EARLY, HAVE BREAKFAST, AND PREPARE FOR THE DAY.

**BREAKFAST CLUB IS NOT  
AFFILIATED WITH THE SACC  
PROGRAM.**

**THE SACC PROGRAM WILL  
NOT ALLOW ENTRANCE TO  
THE BREAKFAST CLUB IF  
YOUR STUDENT SHOWS UP  
PRIOR TO 8:30AM**

